

Skanix Illusion

Copyright Skanix AS 2004-2007
www.skanix.com

**Thank you for your trust in our ability.
You will find the latest information on our website
www.skanix.com**

**Skanix AS
Kartverksveien 7
NO-3511 Hønefoss Norway
E-mail: info@skanix.com**

Index

Before you install	4
Manual installation.....	5
Unattended (silent) installation	7
How does Skanix Illusion work	8
Skanix Illusion properties (GUI).....	9
Exceptions tab	10
Exceptions /Files	11
Exceptions / Directories	12
Add an extension.....	13
Exceptions / Programs.....	14
Exceptions / Registry Keys	15
Settings / Password	17
Settings / Autorestore	18
Settings / Bootmenu	19
About.....	20
Appendix A - working with Symantec Ghost	21
Appendix B - creating password for Skanix Illusion	22
Appendix C - Skanix commandline utility - SICTL.EXE	23
Appendix D - Skanix commandline utility - SICHECK.EXE	24
Appendix E - Revision history	25

Before you install

Skanix Illusion 5.10 is possible to install on Windows 2000 and XP.
It will work on both NTFS and FAT32.
Internet Explorer 6.0 is required.

System Restore

This function is not compatible with Skanix Illusion.
It has to be deactivated before you install.
The installation of Skanix Illusion will fix this.

Password at delivery

Skanix Illusion has the password ILLUSION (capital letters) when it is delivered.
You can change this in the control panel application (GUI) or by using the Skanix Network Suite.
It is NOT possible to change the password in the evaluation version.

Password change if you are updating from an older version

Install Skanix Illusion first and then change the password if needed.
You'll have to change the password if you are using nonsupported characters (look in Appendix B).
If you are using the Skanix Network Suite, the Illusion password shall be changed from the Network Manager.

Working with Antivirus Software together with Skanix Illusion.

Look on our webpage www.skanix.com for a document named virusinfo.pdf.
This document will give you the latest information on how to configure Skanix Illusion together with various Antivirus Software.
The General idea is to have all exe-files as open programs. No open folders is needed.
The original registry will be updated in win2000/XP.

Manual installation

You'll have to be logged on as an administrator in Windows 2000/XP.
It is possible to copy the files to a harddrive and start the installation from there.

Operating system

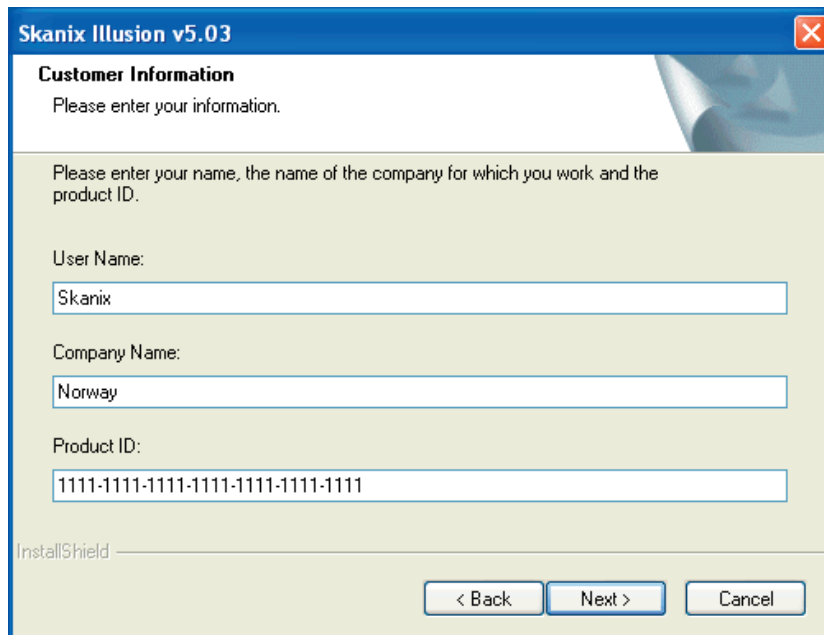
The installation will discover by itself on what operation system it is to be installed on.

System Restore

The installation will discover if you have System Restore activated.

Product ID

Skanix Illusion needs a Product ID in order to be installed.
This ID is in a file in the same folder as the installationprogram.
It is read automatically during the installation.



The screenshot shows a Windows-style dialog box titled "Skanix Illusion v5.03". The window has a blue title bar with a close button (red X) on the right. The main content area is light green and contains the following text and fields:

- Customer Information**
Please enter your information.
- Please enter your name, the name of the company for which you work and the product ID.
- User Name:
- Company Name:
- Product ID:
- InstallShield logo
- Navigation buttons: < Back, Next >, Cancel

Click on **Next** to continue.

Installation Folder

Choose another destination folder or accept the suggested.
Click on **Next** to continue.
Then click on **Install** to start copying files.

Skanix Illusion 5.10

Reboot

Click on **Finish** to end the installation and reboot the computer.

It is necessary to logon before Skanix Illusion is able to finalize the installation.

Before you activate Skanix Illusion

- Close all open windows.
- Empty the recycle bin.
- Delete all cache files.
- Delete all tmp-files.
- Delete all temporary internet-files.

Or your open windows will always be opened when you restart your computer and your cache-files will come back.

Unattended (silent) installation

At the workstation

First time installation

"Filename" /s will install Skanix Illusion without any questions.

Update

This will only work from versions 4.x.

The computer will restart during the installation, and you'll have to logon in order to finish the installation.

Remote

To do a remote update / installation you'll have to install Skanix Network Client first.

Use the "Run" command in the Skanix Network Manager to update / install Skanix Illusion.

First time installation

"Filename" /s /epid"Product ID" /epn"Name" /epc"Company" will install Skanix Illusion without any questions.

If you have the Product ID file in the same folder as the installation program for Skanix Illusion, then you can leave out /epid"Product ID".

You'll have to add Name and Company, otherwise it will not work.

Update

This will only work from versions 4.x.

The computer will restart during the installation, and you'll have to logon in order to finish the installation.

The logon is possible to perform from the Skanix Network Manager.

System Restore

System Restore will automatically be inactivated during the installation.

How does Skanix Illusion work

Skanix Illusion is created to:

- Give you the ability as a normal user to do whatever you like, without tampering the system - a transparent protection.
- To offer a file protection. It is not possible to destroy files in the protected area.

Changes that shall stay after a restart

You'll have to stop Skanix Illusion if you want to install a program and keep it.

Stop Illusion - Install - Start Illusion.

If you want to keep anything in the protected area after a restart, you'll have to stop Illusion first.

Files

Use the possibility to have exceptions in Skanix Illusion, if you want to create files and use them after a restart.

Registry Files

Skanix Illusion protects the Registry as a file. The Registry is restored each time you restart your computer. Exceptions for the registry is possible to have in 2000/XP but not in win98/ME.

Trayicon

The Skanix Illusion Trayicon has two different status.



Activated



Not activated

Start (activate) Skanix Illusion

You start Skanix Illusion from the GUI or from the menu of the trayicon. The GUI is started from the Trayicon or from the Start Menu.

Stop (inactivate) Skanix Illusion

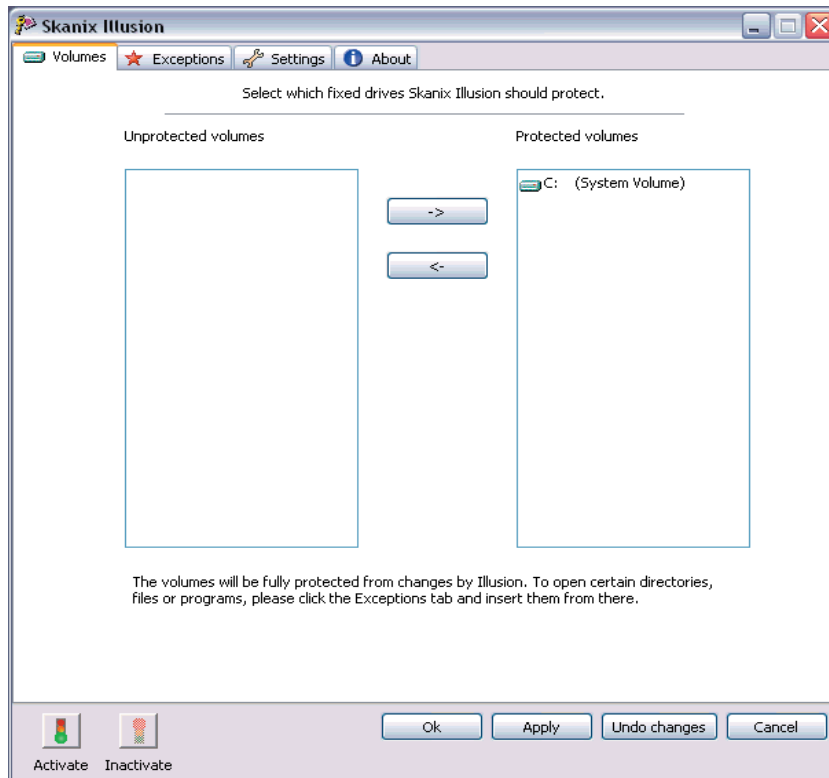
You stop Skanix Illusion from the GUI or from the menu of the trayicon.
The Illusion password is needed to stop Skanix Illusion.

Skanix Illusion properties

It is possible to open the properties when Illusion is stopped.

Skanix Illusion properties (GUI)

You get full access to the properties when Skanix Illusion is inactivated.



Volumes Tab

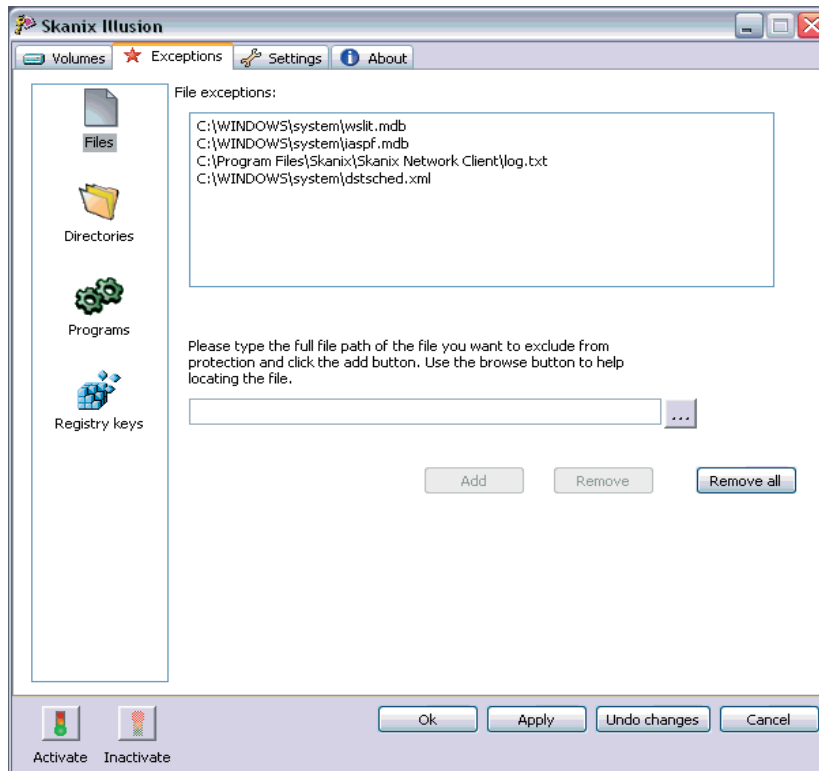
It is only possible to protect local volumes.

Mark unprotected volumes to the left and move them with the arrow over to the protected drives.

Note!

The C volume is always protected, otherwise Illusion will not work.

Exceptions Tab



Common conditions for exceptions

It is possible to have four different exceptions.

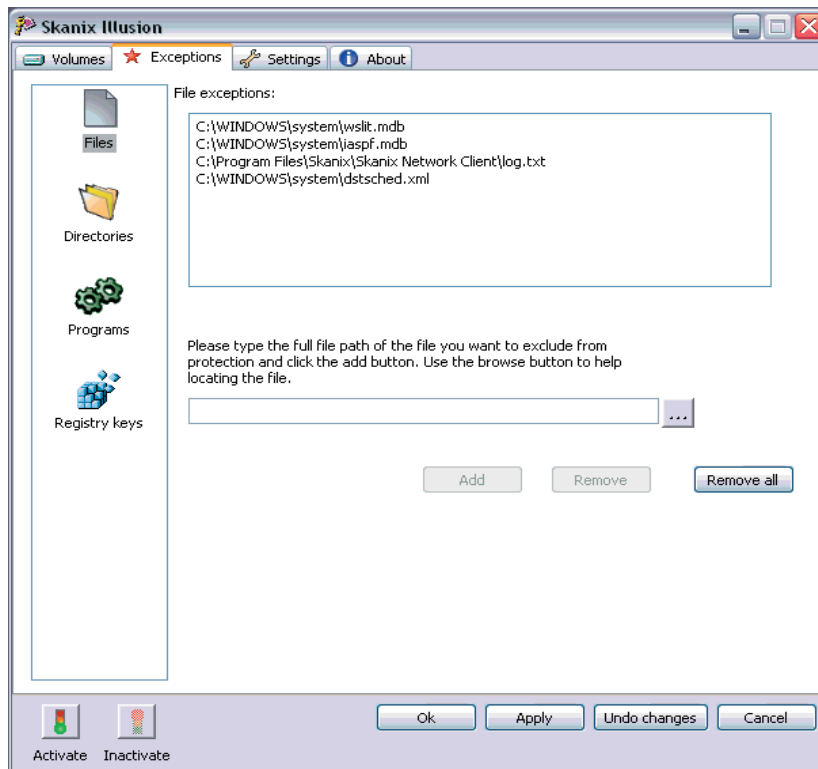
- Files
- Folders
- Programs
- Registry keys

An exception means that something will be saved to the originally file/folder/registry.
There can be a combination of exceptions.

Basic principles

- The exception shall only be entered once.
- It is not possible to have a different exception in a subfolder, since all exceptions applied to a motherfolder is inherited downwards.
- Please remember that 'My Documents' in 2000/XP is a different folder for each user.

Exceptions / Files



Click on Files in the left window.

The information window will show all current exceptions.

Add a file exception

It is only possible to add one file at a time.

1. Write the name in dialogue window under the information window.
2. Browse to the file.
 - * Click on the three dots to the right of the window.
 - * Browse to the file and click on open when you're done.
 - * The selected file will now show up in the dialogue window.
 - * Click on Add.

Edit a file exception

To edit an exception, just dubbleclick on it.

Remove a file exception

Mark the files in the information window and click on Remove.

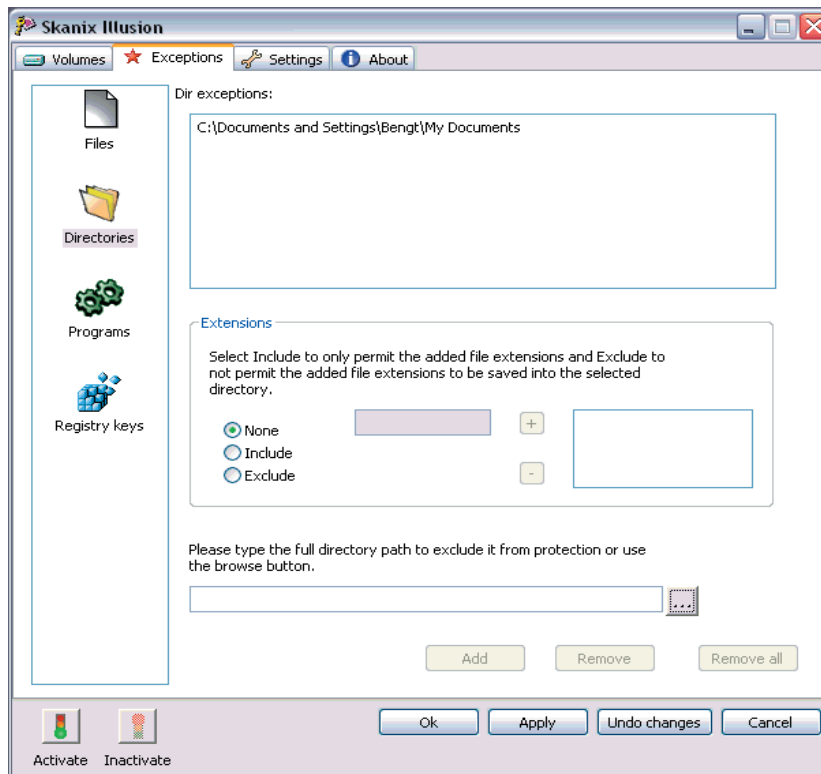
Save/Undo your changes

Click on Apply to save your changes without leaving the GUI.

Click on OK to save your changes and leave the GUI.

Click on Undo Changes and all changes not saved will be gone.

Exceptions / Directories



Click on Directories in the left window.

The information window will show all current exceptions.

Add a directory exception

It is only possible to add one directory at a time.

1. Write the name in dialogue window.
2. Browse to the directory.
 - * Click on the three dots to the right of the window.
 - * Browse to the directory and click on OK when you're done.

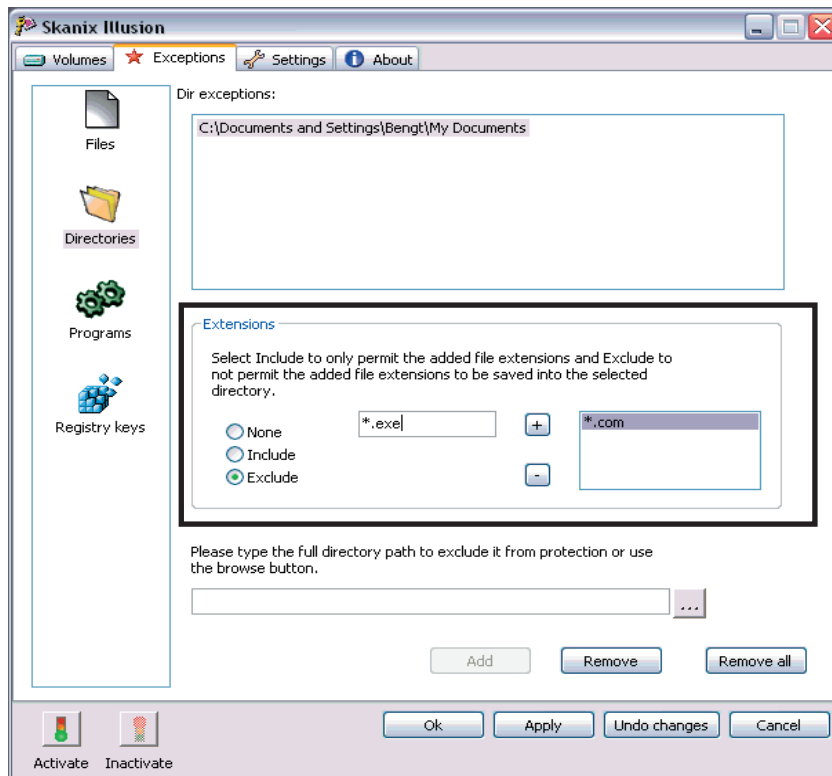
Edit a directory exception

To edit an exception, just dubbleclick on it.

Remove a directory

Mark a directory in the information window and click on Remove or click on Remove All if you like to remove all directories.

Add an extension



Extensions

You can add an extension to an open folder. These extensions are file-suffixes. EXE, COM, BAT, JPG, XLS...

Include

To include an extension means that ONLY files with included extensions will stay.

Exclude

To exclude an extension means that files with excluded extensions will go away.

Note!

The files will go away when you restart your computer.

Add/Remove an extension

Mark a directory and choose if it is an include or an exclude extension. Write the extension in the box. (*.com ; *.exe) Don't forget *. Click on the + sign to add. You'll remove an extension by marking it in the right window and then click on the - sign.

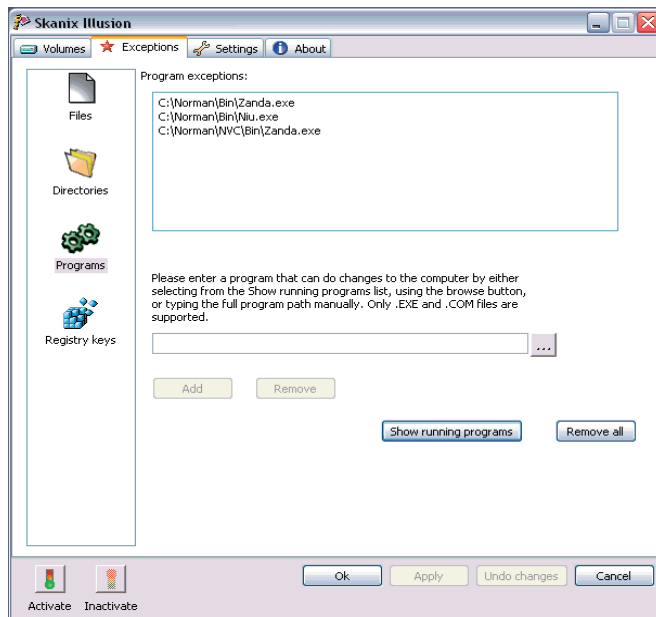
Save / Undo your changes

Click on Apply to save your changes without leaving the GUI.

Click on OK to save your changes and leave the GUI.

Click on Undo Changes and all changes not saved will be gone.

Exceptions / Programs



Click on Programs in the left window. The information window will show all current exceptions

What does an open program do?

2000/XP

It saves information to the originally files. Information is also saved in the originally registry files.

Add a program in the exception list

Show running programs

All programs/processes that are currently running are shown in a window.

Mark the program you like to add and click on Add.

Browse

Click on the Browse button if you like to add a file from the filessystem.

Write the path

You can also write the full path in the dialogue window. Click on Add when your done.

Note

An open program cannot read information in the Illusion cache folder, as it will always look on the original file / registry.

Save/Undo your changes

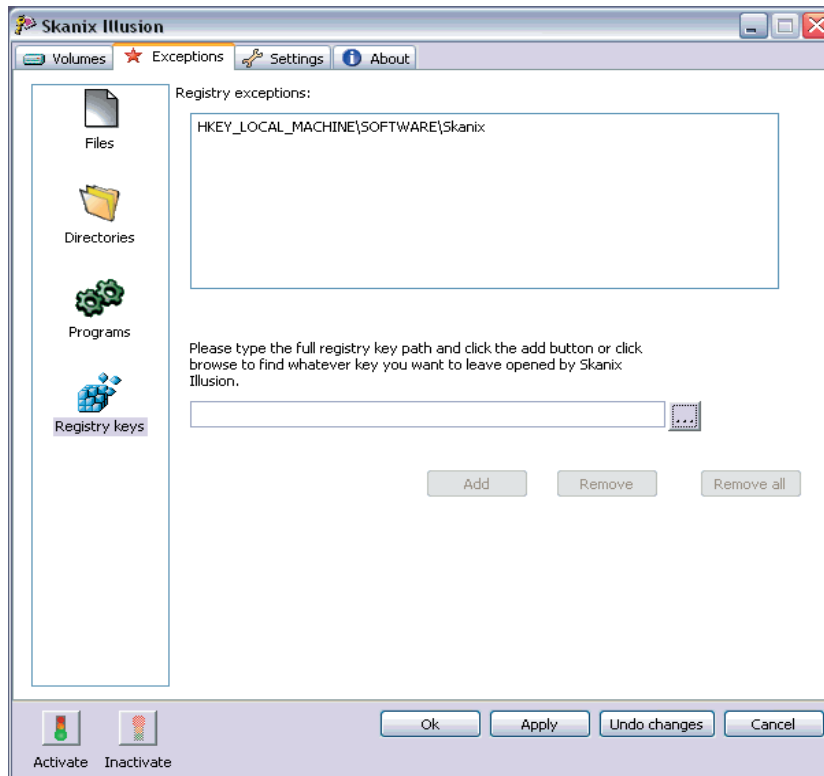
Click on Apply to save your changes without leaving the GUI.

Click on OK to save your changes and leave the GUI.

Click on Undo Changes and all changes not saved will be gone.

Skanix Illusion 5.10

Exceptions / Registry Keys



Click on Registry Keys in the left window.
The information window will show all current exceptions

What's the use of it

If you have registry values that are critical for your system, and they are updated by a process/program on daily/weekly/monthly basis, it could be necessary to create an open key.

Note!

If you know the program that do the registry change, then you should set this as an open program instead. Open programs in 2000/XP will update the original registry files.
Open programs is the normal way to work with Antivirus programs.

Skanix Illusion 5.10

Add a registry key exception

It is only possible to add one exception at a time.

It is only possible to add a registry key that exist.

1. Write the complete path to the registry key in dialogue window under the information window.
2. Browse to the key.
 - * Click on the three dots to the right of the window.
 - * Browse to the key and click on '**Add to exceptions**' when you're done.

Remove a key exception

Mark the keys in the information window and click on Remove.

Save your changes

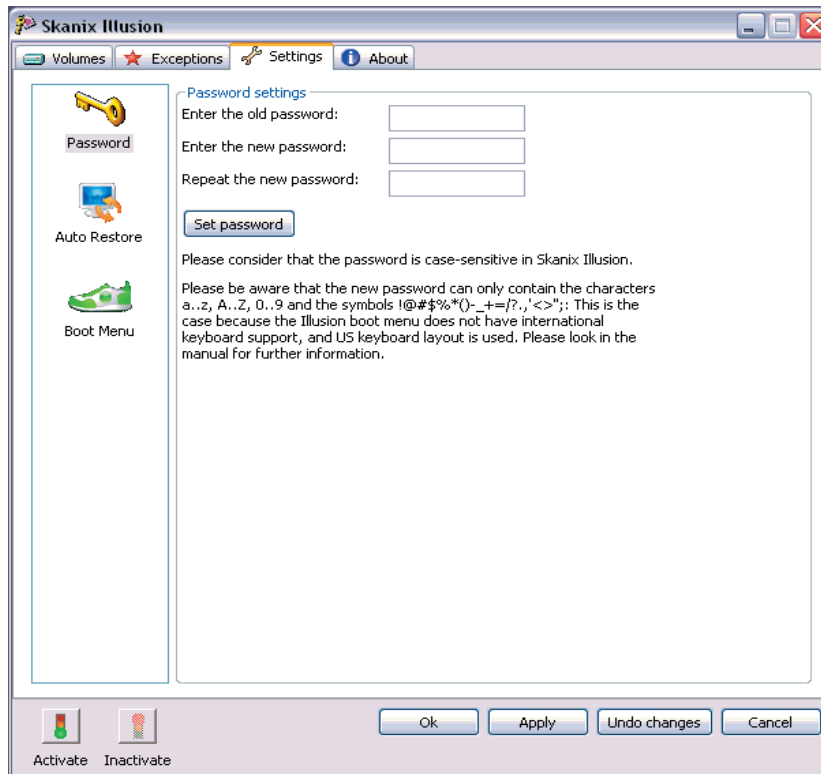
Click on Apply to save your changes without leaving the GUI.

Click on OK to save your changes and leave the GUI.

Click on Undo Changes and all changes not saved will be gone.

Skanix Illusion 5.10

Settings /Password



Password at delivery

The password at delivery is ILLUSION (capital letters)

Change it!

It is necessary to change it! The password is directly saved when you click on **Set Password**.

Characters to use

It is only possible to use

abcdefghijklmnopqrstuvwxyz
ABCDEFGHIJKLMNOPQRSTUVWXYZ
0123456789
!@#%&*()-_+=/?.<>'\";: .

This is because these are the only available signs for a keyboard in the bootmenu.

See Appendix B.

NOTE!

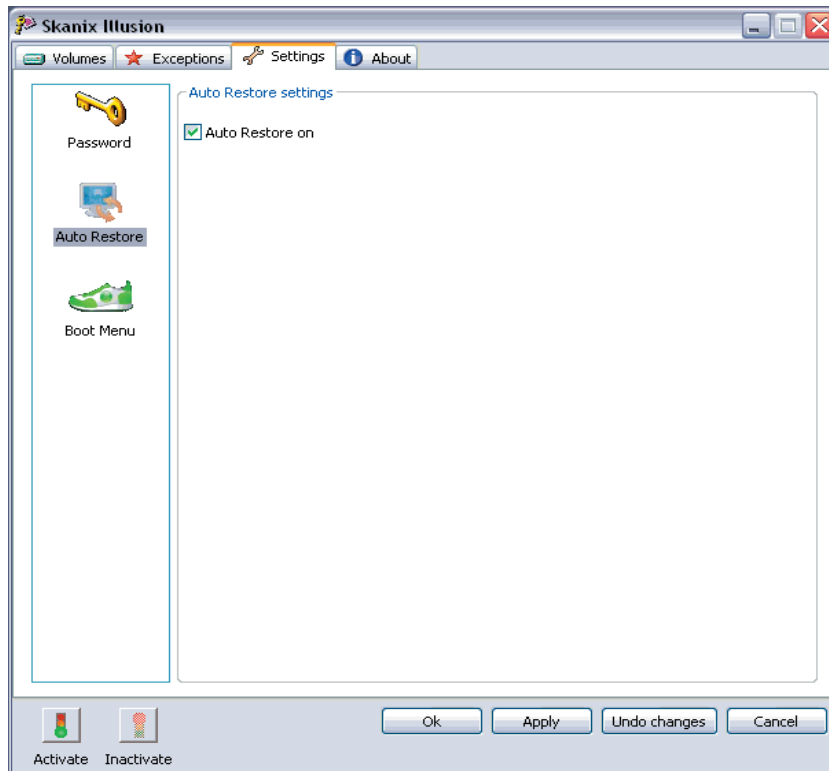
If you have an older version of Skanix Illusion installed, you have to change the password after you updated BUT before you activate Skanix Illusion. Please use the Network Manager to change the password when you are using the Network Suite

Network Suite

If you are using the Skanix Network Suite too, you should use that to change the password, otherwise it is not correctly saved in the configuration file.

Skanix Illusion 5.10

Settings /Autorestore



Activated

When activated it will restore the computer every time you restart the computer. You should use this option in a schoolnetwork.

Not activated

All information in the cache will stay.
This function will slow down your computer because of all checks.

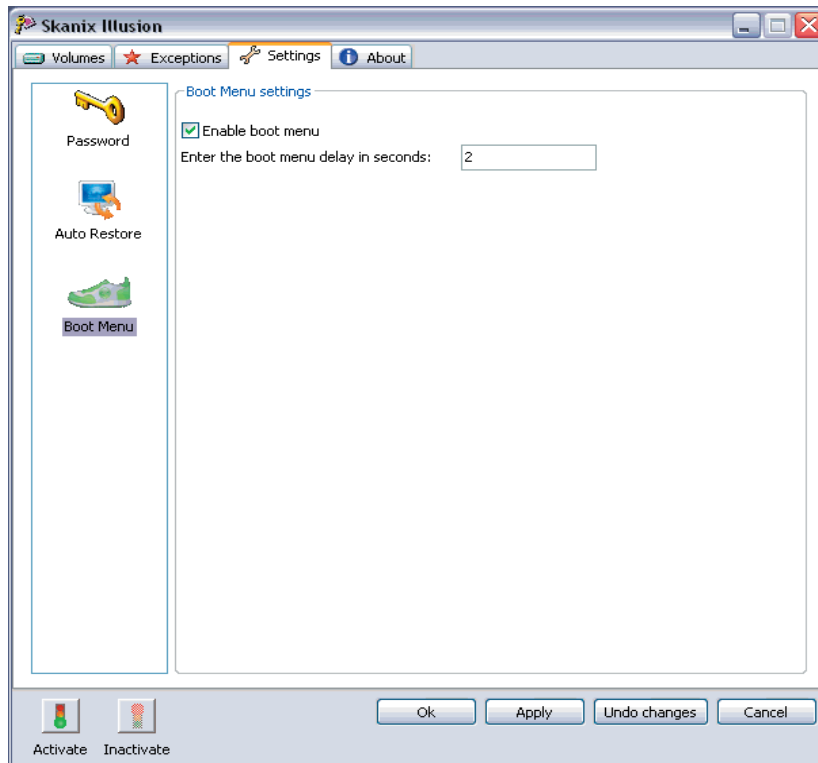
Restore Now

If autorestore is not activated, you can restore the computer by clicking on Restore Now.

Save your changes

Click on Apply to save your changes without leaving the GUI.
Click on OK to save your changes and leave the GUI.
Click on Undo Changes and all changes not saved will be gone.

Settings / Bootmenu



Special bootscreen at startup

Enabling the bootmenu will show a special screen at startup.

The time it will stay is decided by the value in seconds.

Default value after installation is set to two seconds.

Known limitations

It is not possible to interrupt the startup if you have an usb-keyboard.

Only PS/2 keyboards can be used.

Save your changes

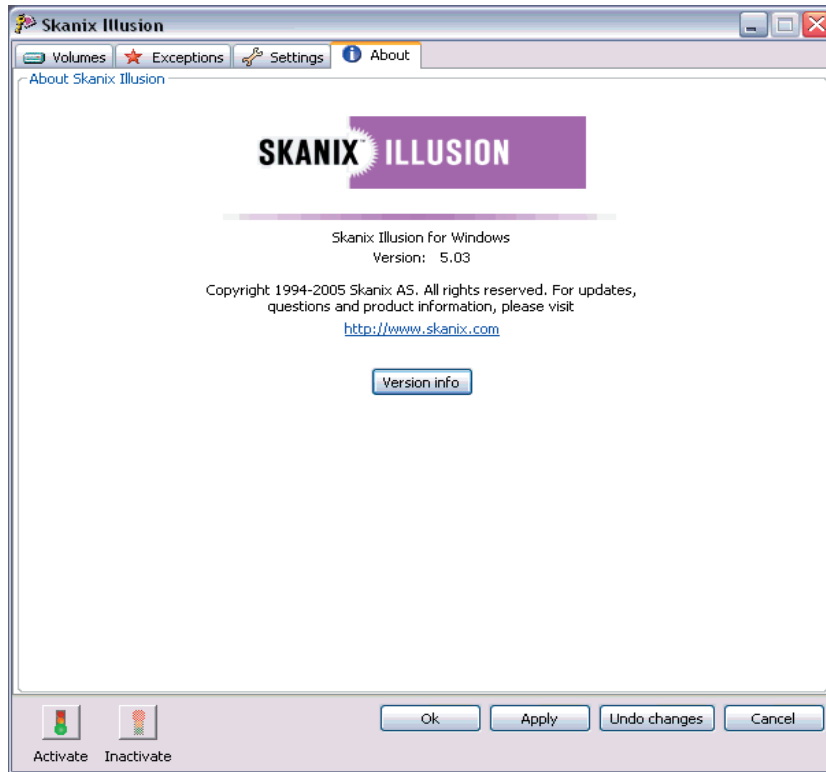
Click on Apply to save your changes without leaving the GUI.

Click on OK to save your changes and leave the GUI.

Click on Undo Changes and all changes not saved will be gone.

Skanix Illusion 5.10

About



Just for information.

Appendix A

Using Symantec Ghost together with Skanix Illusion

Background

Symantec Ghost has a possibility to an advanced deployment of an image created on a master computer. This computer is built up with all software including Skanix Illusion that is not started. When the image from the master computer is deployed to a workstation, it hangs when Skanix Illusion is started.

This is the problem

The image is created on a master computer that has the c-drive as volume 1.
The receiving workstations have an extra volume.
This volume is created by Symantec Ghost.
This means that the c-drive is volume 2.

How to solve it

See to it that the master computer and the receiving computer has the same volume setup.
This will solve the problem.

Appendix B

Creating password for Skanix Illusion

When creating a password for Illusion, it is only possible to use the basic characters of the american keyboard with or without using shift, due to limitations when using the bootmenu.

Supported signs

abcdefghijklmnopqrstuvwxyz

ABCDEFGHIJKLMNOPQRSTUVWXYZ

0123456789

!@#\$%&*()-_+=/?.,<>'\";:.

Keyboard layout when using the bootmenu



It is the American keyboard layout that is used together with the bootmenu, since no keyboard drivers are loaded.

Appendix C

Skanix Illusion utility - SICTL.EXE

This is a commandline utility.

Use SICTL like this:

- ❑ **sictl**
Will give you the current status for Skanix Illusion.
- ❑ **sictl query**
Same as just sictl.
- ❑ **sictl /?**
Give you the parameters for sictl.
- ❑ **sictl start**
Skanix Illusion will start after a reboot. This reboot is not initiated by the command.
- ❑ **sictl stop [password]**
Skanix Illusion will stop after a reboot. This reboot is not initiated by the command. You'll need the password for Skanix Illusion.
- ❑ **sictl restore [password]**
Skanix Illusion will restore the system after a reboot. This reboot is not initiated by the command. You'll need the password for Skanix Illusion.
- ❑ **sictl chpass**
Change password. Old and new password is given after a question from the utility.
- ❑ **sictl ver**
Give you the version information.
- ❑ **sictl reboot**
The computer is immediately rebooted.
- ❑ **sictl export <filename.xml>**
Will export all illusion settings into a xml-file.

Appendix D

Skanix Illusion utility - SICHECK.EXE

This is a commandline utility.

Use SICHECK like this:

The purpose of the application is to check if Skanix Illusion is activated or not.

When run, it displays the string "INACTIVE" or "ACTIVE" on the first line and the version number on the second line.

The information can be redirected to a file instead.

SICHECK >status.txt will save the screen information into the file status.txt instead.

The ERRORLEVEL value when SICTRL has been run, is 0 for INACTIVE and 1 for ACTIVE.

Appendix E

Revision History

Skanix Illusion 5.03 compared to 5.02

❑ Driver

- Driver is tuned for better performance handling registry access.
- Fixed errors sometimes occurring during logon and loading profile from server.
- Fixed possible problem logging on as a new user created with active Illusion.
- Fixed error renaming directories from Windows Explorer.
- Fixed an issue where a modified EXE file might be launched as an open process.

❑ GUI

- Fix occasional GUI crashes when pressing OK to Apply.
- Added Undo feature.
- Now possible to Edit exceptions in the list, by double clicking.

❑ General

- Fixed so System Restore can now be enabled after Skanix Illusion is uninstalled.

Skanix Illusion 5.10 compared to 5.03

❑ Installation

- Support for Win98/ME is removed.

❑ Driver

- Certain files with short names (8.3) was not cached correctly.
- Bluescreen with IRQL_NOT_LESS_OR_EQUAL, code 0x0A could appear when using USB memory sticks.
- User rights and ownership for files and directories was not always cached correctly.
- Sophos Antivirus could not read information correctly from the registry.

❑ GUI

- Crashed sometimes on exiting status screen if Illusion was active.
- Hanged sometimes while an exception was selected and the browse button was pressed.